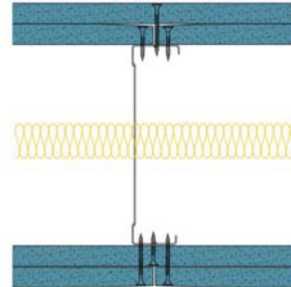


146-B-60(25) - SPEEDLINE System Data Sheet - Version V1 (24-10-23)

SPEEDLINE 146mm 'C' Stud Partition @600mm Ctrs, with 2x BG Gyproc 15mm SoundBloc each side, 25mm APR



System Performance Breakdown

Fire Resistance:

BS476 Part 22:1987:

Test Ref & Date or Applied Ref & Report:

Max Height:

Thickness:

Duty Grade: BS 5234: Part 2:1992:

Sound Insulation:

90/90 Minutes (Integrity/Insulation).

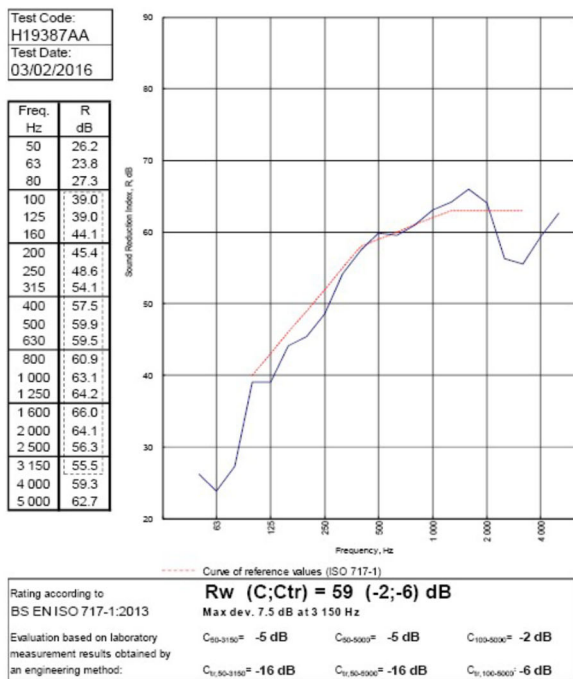
BTC 17440F - BRE Report P102396-1011A

Refer to Speedline Specification Clause

208 mm. (At Base Track, Excluding Finishes)

Severe - Annexes A-F

59 R_w dB, -6Ctr Date Tested or Assessed Against - 03/02/2016



TESTED AT ONE OF THE UKAS ACCREDITED LABORATORIES BELOW

- B.T.C (H-Ref on Graph)
- B.R.E
- AIRO
- S.R.L

Customer: Voestapline Metsec Plc

BTC 19387A: Page 11 of 14



SPEEDLINE Drywall Systems, Adsetts House, 16 Europa View, Sheffield Business Park, Sheffield, S9 1XH.

Tel: 0114 231 8030.

Email: enquiries@speedlinedrywall.co.uk

(As per the requirements set out in ISO/IEC 17025:2017 regarding test data the results stated have been carried out by voestapline Metsec plc as part of the contract to supply Speedline Metal Sections to SIG Plc)